

AXER^{TASK} RANGE



AXER

The Axer Task Chair range is one of Sturdy's newest range of Task Chairs for your office desk, with it's new style square back the Axer Task Chair would be a stylish addition to any modern office.

The Axer Task Chair family is quite extensive starting from the basic Task Chair moving through to the Drafting Chairs, with many options in between like the stylish square seat, height adjustable arms, polished bases, slide seat and ergo seat just to mention a few.



L6



Not all models have AFRDI certification. AFRDI certifies for select models available upon request.

Option codes must be placed in alphabetical order after chair code



AXER AX26A5B11

Back Size: 430 W x 510 H (High back)
430 W x 430 H (Medium back)
Seat Size: 480 W x 460 D
500 W x 460 D (S2)
515 W x 480 D (S5)
Seat Height: 450 - 580 (Typist / Clerical)
560 - 760
(Drafting standard D1 & D3 footring)
630 - 890
(Drafting standard D2 & D4 footring)



A5
Height adjustable arm



A4
Chrome adjustable arm



B10
Black spider base



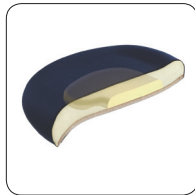
B11
Polished spider base



D11 & D12
Aluminium footring



D3 & D4
Black plastic footring



E
Ergosit seat cushion



S4
Square seat option



S6
Larger seat option



SS
Slide seat

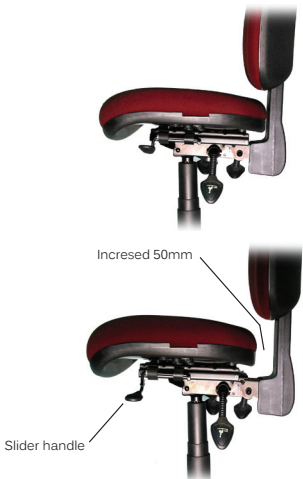


SLIDE SEAT INSTRUCTIONS

The Slide Seat mechanism allows the seat to slide forward increasing the seat depth by 50mm. It offers 5 locking positions.

As depth between the back and seat increases it allows larger people more comfort.

To operate simply lift the handle and slide the seat forward or backward to adjust into a one of the 5 locking positions. The mechanism should find each locking position without any force necessary.



HIGH BACK

AX30 non tilt seat
AX36 3 Paddle
AX39 syncro



MEDIUM BACK

AX20 non tilt seat
AX26 3 Paddle
AX29 syncro



SQUARE SEAT

AX20S4 non tilt seat
AX26S4 3 Paddle
AX29S4 syncro



DRAFTING

AX20D3 non tilt seat
AX26D3 3 Paddle

