

ECCO TASK RANGE



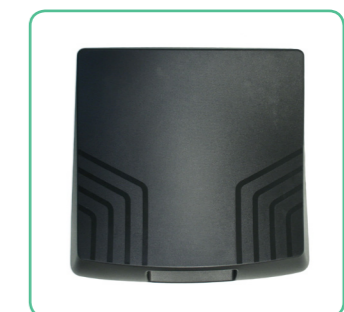
ECCO

The Ecco has been designed for the corporate executive who is looking for something more than just a chair, as it combines all the functionality of a task chair with all the style and aesthetics of an executive chair.

Clients can use the vast array of options and aesthetics to tailor the office landscape from the receptionists to the managing director without any loss in appearance or functionality.

Fitted with a synchronized mechanism, which has a 1:2 ratio (for every 1 degree of seat tilt, the back tilts two degrees). Synchronized mechanisms are considered the most advanced as they mimic the ergonomic movement and posture of the human form.

Aesthetically it is a unique looking chair with a modern and up market appearance which will enhance any office interior.



Back Pattern



ECCO EC36A4B11

Back Size: 480 W x 545 H (High back)
 460 W x 480 H (Medium back)
 440 W x 400 H (Low back)
 Seat Size: 480 W x 460 D
 515 W x 480 D (S5)
 560 W x 500 D (S6)
 Seat Height: 460 - 560

Option codes must be placed in alphabetical order after chair code

A4 Height adjustable arm	A5 Height adjustable arm	B10 Black spider base	B11 Polished spider base
C1 Brake castors (carpet floors)	C2 Brake castors (hard floors)	C5 Glides	D1 & D2 Aluminium footring
D11 & D12 Aluminium footring	D3 & D4 Black plastic footring	E Ergosit seat cushion	S5 and S6 Larger seat options



MEDIUM BACK

EC20 non tilt seat
 EC26 3 paddle mech
 EC29 syncro



HIGH BACK

EC30 non tilt seat
 EC36 3 paddle
 EC39 syncro



DRAFTING

EC20D1 non tilt seat
 EC26D1 3 paddle
 EC29D1 syncro



SLIDE SEAT INSTRUCTIONS

The Slide Seat mechanism allows the seat to slide forward increasing the seat depth by 50mm. It offers 5 locking positions.

As depth between the back and seat increases it allows larger people more comfort.

To operate simply lift the handle and slide the seat forward or backward to adjust into a one of the 5 locking positions. The mechanism should find each locking position without any force necessary.



TASK RANGE

